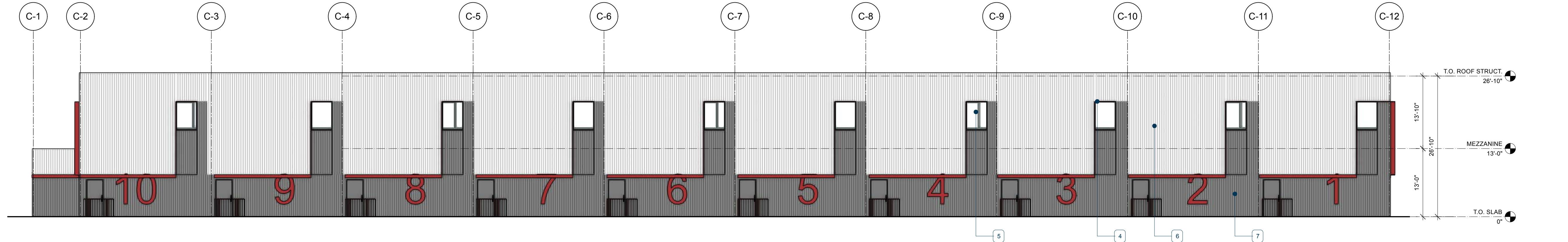
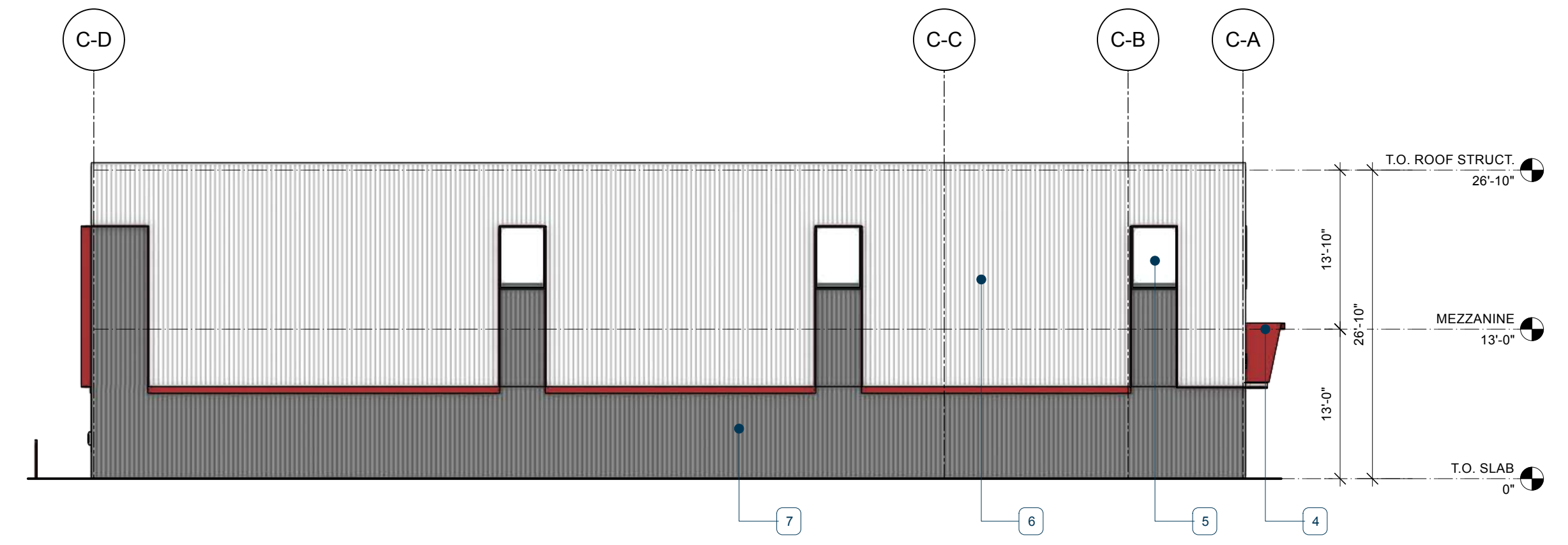




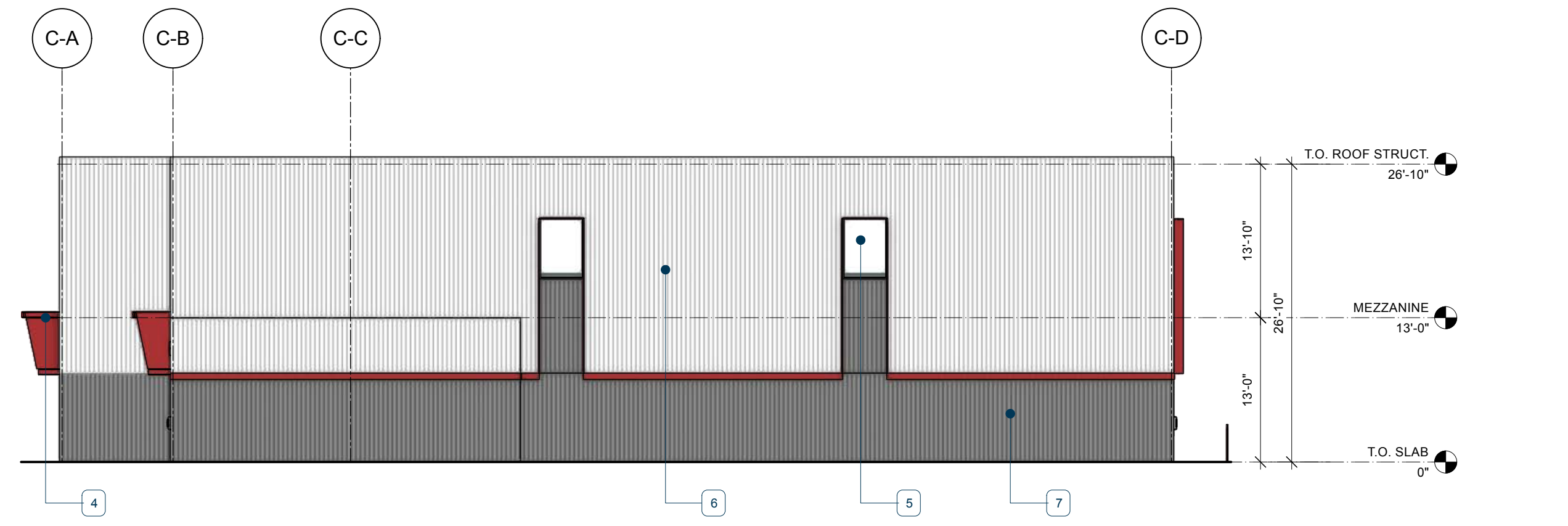
1 BLDG C - SOUTH ELEVATION
Scale: 3/32" = 1'-0"



2 BLDG C - NORTH ELEVATION
Scale: 3/32" = 1'-0"



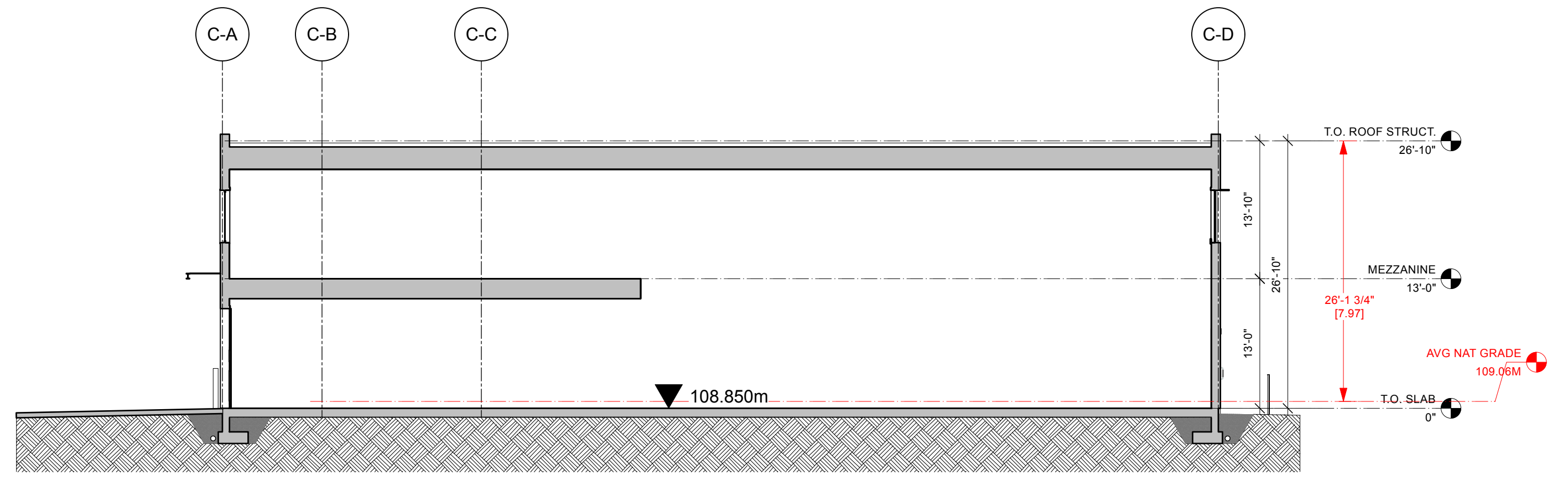
3 BLDG C - WEST ELEVATION
Scale: 3/32" = 1'-0"



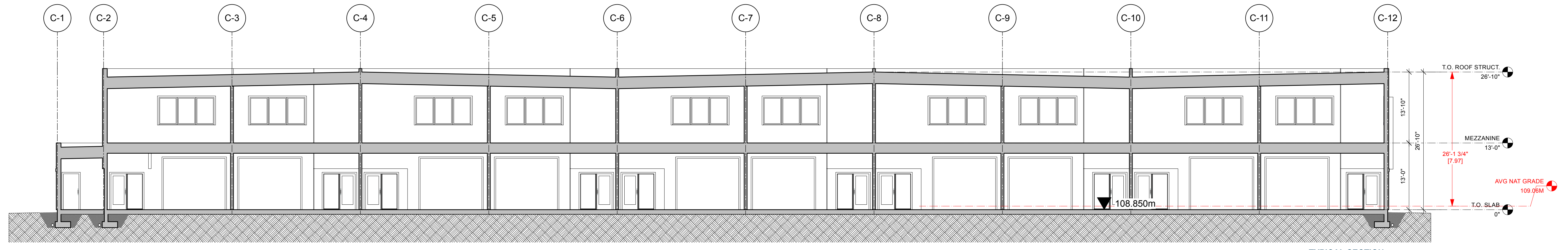
4 BLDG C - EAST ELEVATION
Scale: 3/32" = 1'-0"

BLDG C - MATERIAL LEGEND

1. STOREFRONT OR CURTAIN WALL ENTRY DOOR WITH SIDELIGHT, CHARCOAL
2. STEEL ROLL UP OVERHEAD DOOR, CHARCOAL
3. SUITE SIGNAGE, BACK-LIT OR WITH LIGHT OVER
4. STEEL C-CHANNEL CANOPY WITH COVER
5. STOREFRONT OR CURTAIN WALL GLAZING UNIT, CHARCOAL
6. PRE-ENGINEERED INSULATED METAL PANELS; LIGHT
7. PRE-ENGINEERED INSULATED METAL PANELS; DARK



1 TYPICAL SECTION
Scale: 3/32" = 1'-0"



2 TYPICAL SECTION
Scale: 3/32" = 1'-0"

RECEIVED
DP1346
2025-JAN-14
Current Planning